

S618-P-DR12VNR

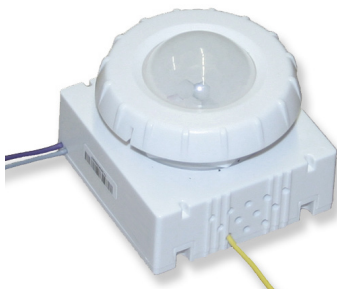
Low Voltage PIR In-Fixture Dimming Sensor



Designed for LED fixtures & rated IP66 when properly installed

Daylight harvesting enabled by internal photodiode

Low cost & warranted for 5 years



Multi-element PIR detector with various lens options for different coverage areas

Relay-less operation with Dim-to-Off capable drivers and ballasts

Commissioning, adjustment, and override via IR remote control

PRODUCT OVERVIEW

Introduction

The S618-P-DR12VNR is a relay-less motion and light sensor that is powered by a 12VDC source, works fully with Dim-to-Off capable drivers, and is designed for installation inside commercial lighting fixtures found in parking lots, industrial yards, and other shared outdoor spaces. The weatherproof sensor uses passive infrared (PIR) sensing technology to detect motion in its coverage area and automatically dim and/or turn off lights when persons have left the area, reducing energy usage.

Operation

The sensor turns on connected lights to full brightness when motion is detected (100% dimming voltage is sent to driver). When the sensor no longer detects movement and the standby time delay expires, lights are dimmed according to the set dimming level and will eventually be dimmed to off (0%) after the dimming time delay expires. A measured or preset ambient light threshold can keep lights off if there is sufficient natural light, leading to additional energy savings.

Commissioning

Setup for sensor adjustments is performed via the included IR remote control. The remote allows parameter changes to sensitivity of the PIR detector, standby and dimming time delays, dimming level, and ambient light threshold. All settings are stored in non-volatile memory in case of electrical fault.

Applications

This low-profile sensor is designed for installation inside the bottom of a light fixture body. When properly assembled and installed in an IP66 rated fixture, the sensor and lenses are IP66 outdoor rated, ideal for the following applications:

LOCATIONS

- Parking lots
- Gas stations
- ATMs & kiosks
- Sports facilities
- Industrial yards
- Airports

PATHWAY

- Streetlights
- School campuses
- Public parks
- Footbridges
- Walkways
- Driveways

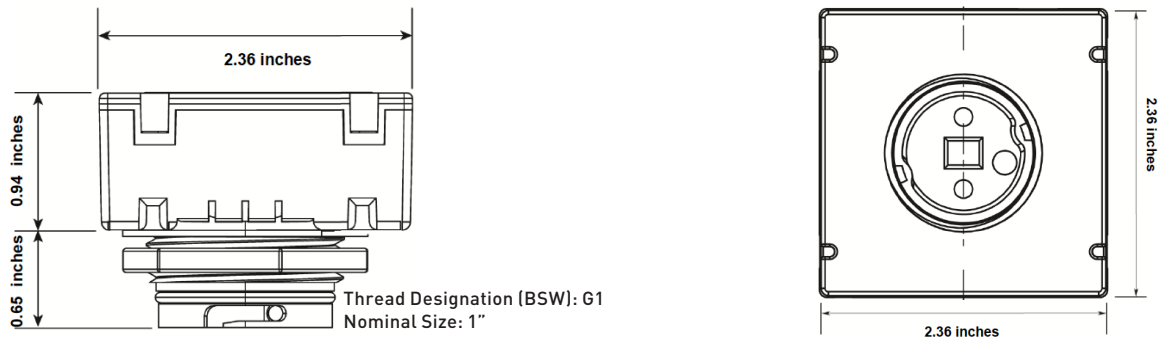
FEATURES

- Powered by a 12VDC source and provides on/off/dimming control of lighting fixture(s) when used with Dim-to-Off capable dimmable drivers and ballasts
- 10 seconds to 60 minutes standby time delay for a wide range of installation locations and applications
- 1 to 60 minutes dimming time delay for dimmed lighting
- Internal photodiode measures ambient light and observes threshold set at measured or preset light levels
- Built-in quick installation testing mode
- IR remote control allows quick setup, settings adjustment, and manual on/off override
- Multiple lenses available for different coverage areas
- Compact, UV resistant, flame retardant, impact resistant, and recyclable polycarbonate construction
- IP66 rated for use in outdoor/wet locations when properly installed in equivalent rated fixture

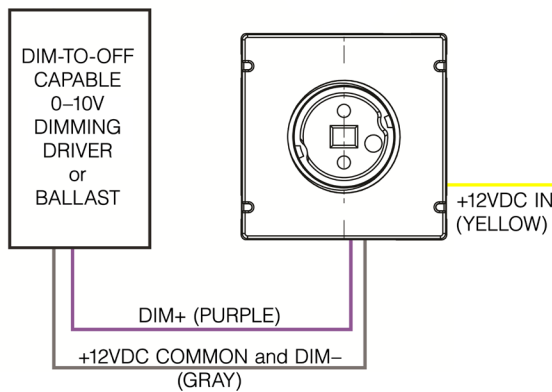
SPECIFICATIONS

- Input Voltage: 12VDC
- Standby Time Delay Periods: 10 secs, 1 min, 5 mins (default), 15 mins, 30 mins, 60 mins
- Dimming Time Delay Periods: 1 min, 30 mins, 60 mins (default), 24h (dimming always on)
- Dimming Levels: 0%, 10%, 20% (default), 30%
- 0–10VDC Dimming Current: Max 100mA (sink)
- Photodiode Sensitivity Range: 1 to 185 fc
- Operating Temperature: –40 to +131 °F
- Operating Humidity: 20 to 90% non-condensing
- Weatherproof Rating: IP66 (when fully installed inside rated fixture)
- Safety Certifications: UL/cUL listing pending
- Regulatory Code Compliance: California Title 24

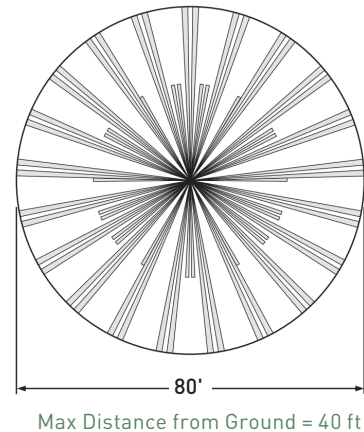
DIMENSIONS



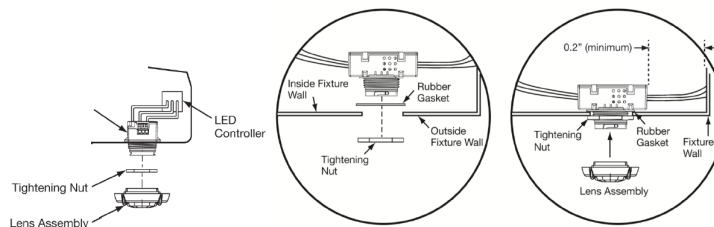
WIRING



COVERAGE PATTERN (STANDARD LENS)



MOUNTING



ORDERING INFORMATION

Part Number	Color	Description
S618-P-DR12VNR	White	Low Voltage, In-Fixture, PIR Sensor with 0–10V Dimming & IR Remote Control Capabilities
S618-ACC-LS2	White	Standard Lens, Optimized for 40 ft Mount Height
S618-ACC-LW1	White	Wide Lens, Optimized for 8 ft Mount Height
S618-ACC-PS	White	External Photo Sensor
S-ACC-RC-D2	Black/White	Handheld IR Remote Control